



# Victoria

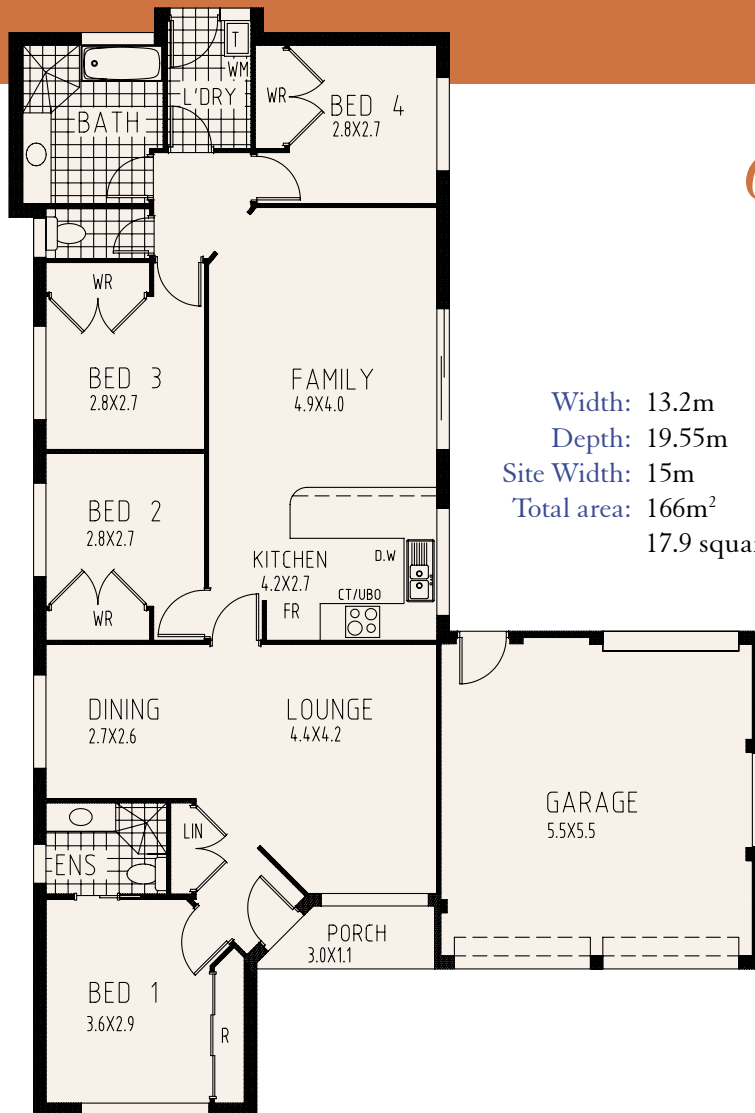
*from*  
Westminster Homes



*Master built family homes since 1965*

# Victoria

from  
Westminster Homes



Width: 13.2m  
Depth: 19.55m  
Site Width: 15m  
Total area: 166m<sup>2</sup>  
17.9 squares

## *Open plan excellence you'll never want to leave*

For first home buyers with an eye for value, the 4-bedroom Victoria offers more than you would have thought possible. At the front of the home are the spacious lounge and dining areas, plus the private master bedroom and ensuite. The large kitchen with its wide breakfast bar is centrally located to the family living area and provides easy access to the outdoor area for informal entertaining.

The Victoria includes 3 more bedrooms, all with built-ins, in its 18 squares. There's a large family bathroom with separate toilet and a double drive-through garage to complete the picture in this affordable yet stylish family home.

Westminster Homes is a family owned building company that's been building family homes since 1965. We pride ourselves on building quality, well-designed homes at an affordable price, and delivering outstanding service every step of the way.



*Master built family homes since 1965*