



Pengilly

from
Westminster Homes

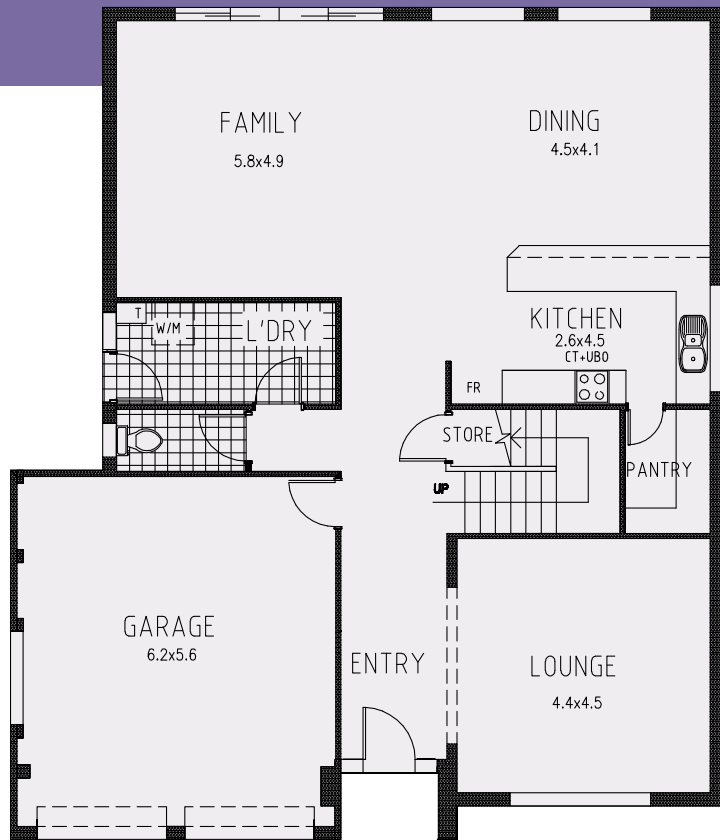


Master built family homes since 1965

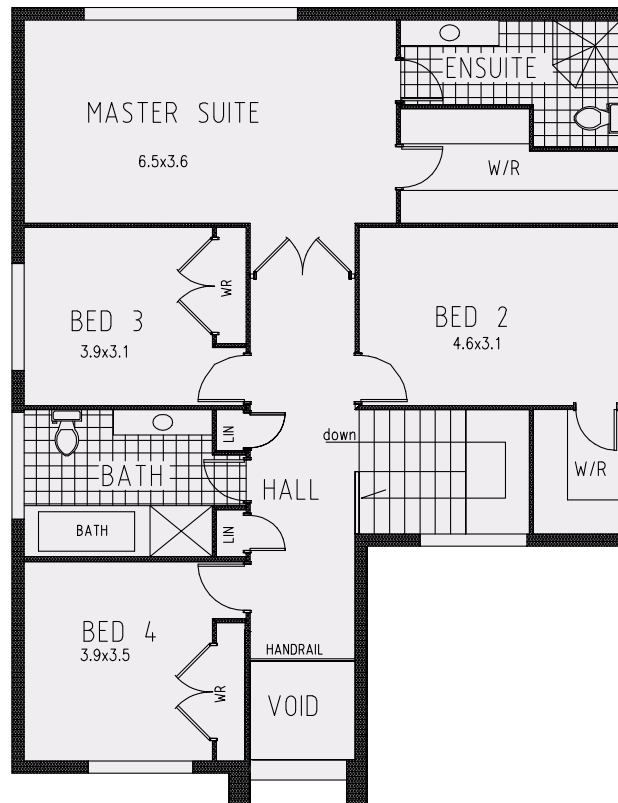
Pengilly

from
Westminster Homes

The lifestyle home your family deserves



Width: 12.63m
 Depth: 14.74m
 Site Width: 15m
 Total area: 300m²
 32.3 squares



Sweeping roof lines and contemporary style set the scene for relaxed family living. The Pengilly offers an elegant formal lounge plus a huge family/dining area that's over 10 metres long. Integrated with a modern and functional kitchen, walk-in pantry and extra long breakfast bar, this home is an ideal entertainer. Internal access to the double garage is conveniently located just metres away.

Upstairs there are 4 large bedrooms including a vast master bedroom with a beautiful ensuite and spacious walk-in wardrobe. Need even more room? Then consider an optional downstairs rumpus room and upstairs games room.

Westminster Homes is a family owned building company that's been building family homes since 1965. We pride ourselves on building quality, well-designed homes at an affordable price, and delivering outstanding service every step of the way.



Master built family homes since 1965