



Huntley

from
Westminster Homes



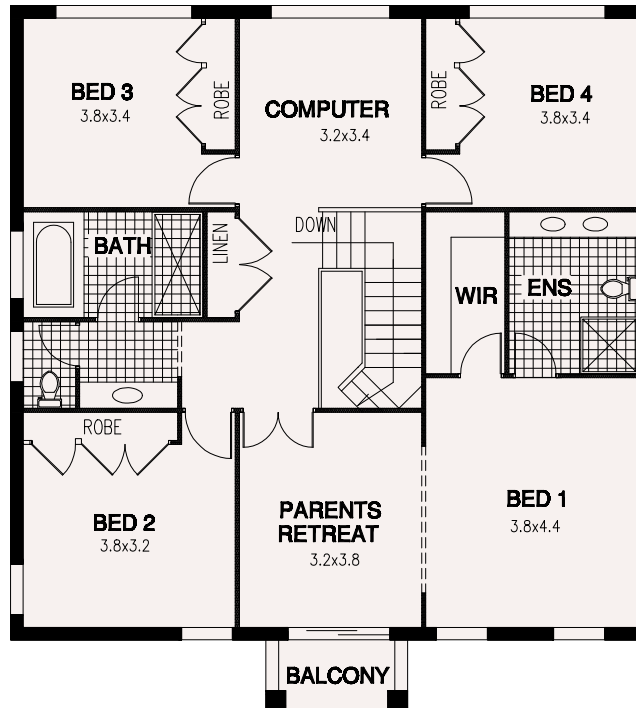
Master built family homes since 1965

Huntley

from
Westminster Homes



Width: 12.54m
 Depth: 17.24m
 Site Width: 14.35m
 Total area: 295m²
 31.7 squares



A family home of supreme elegance

Double entry doors open to the Huntley's elegant and spacious foyer, setting the scene for sophisticated living. A large kitchen is centrally located to both the formal and casual entertaining areas, and a study offers a place to relax in peace or work from home. Naturally, there's convenient internal access to the double garage.

Upstairs there are 4 large bedrooms including a master bedroom with an airy parent's retreat which even has its own balcony, a roomy ensuite and walk-in wardrobe. There's also a designated computer area where children can work on their computers in an easily supervised zone.

Westminster Homes is a family owned building company that's been building family homes since 1965. We pride ourselves on building quality, well-designed homes at an affordable price, and delivering outstanding service every step of the way.



Master built family homes since 1965