



Glenburn

from
Westminster Homes

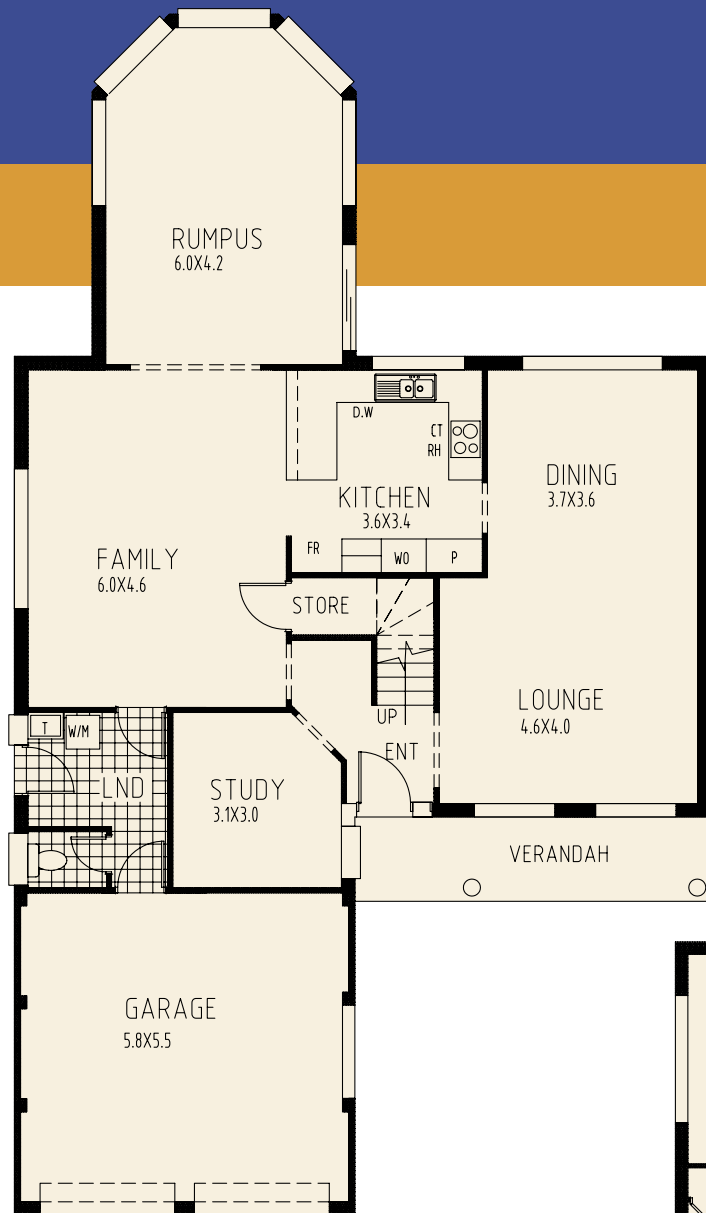


Master built family homes since 1965

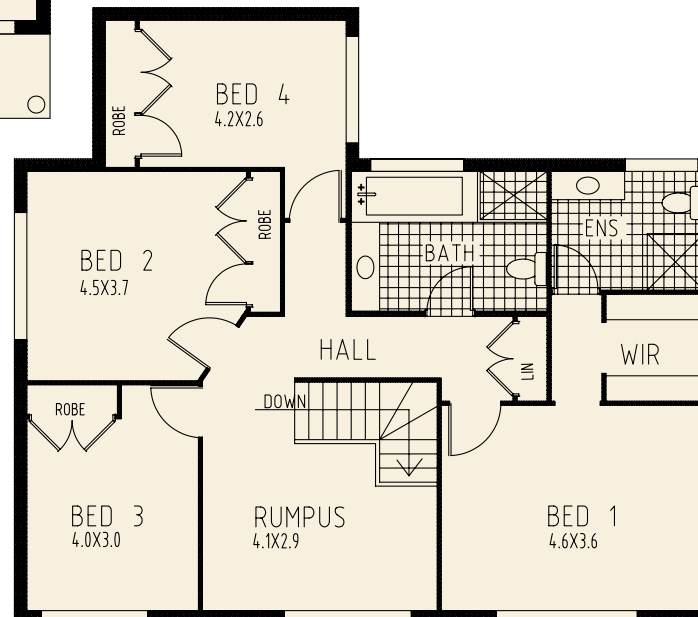
Glenburn

from
Westminster Homes

Flexible, liveable and surprisingly affordable



Width: 12.4m
Depth: 21.37m
Site Width: 15m
Total area: 296m²
31.85 squares



The 32 square Glenburn is a spacious and versatile family home designed for easy living. The designer kitchen is perfectly located adjacent to the dining room and the home's generous entertaining areas. Boasting spacious living, family, rumpus and upstairs games rooms, there's plenty of room for the whole family to relax.

There are 4 double bedrooms including a master bedroom with ensuite and walk-in wardrobe, a study and double garage. Plus, Westminster Homes will even adjust the flexible floor plan to suit your individual needs.

Westminster Homes is a family owned building company that's been building family homes since 1965. We pride ourselves on building quality, well-designed homes at an affordable price, and delivering outstanding service every step of the way.



Master built family homes since 1965