

Elizabeth

from
Westminster Homes

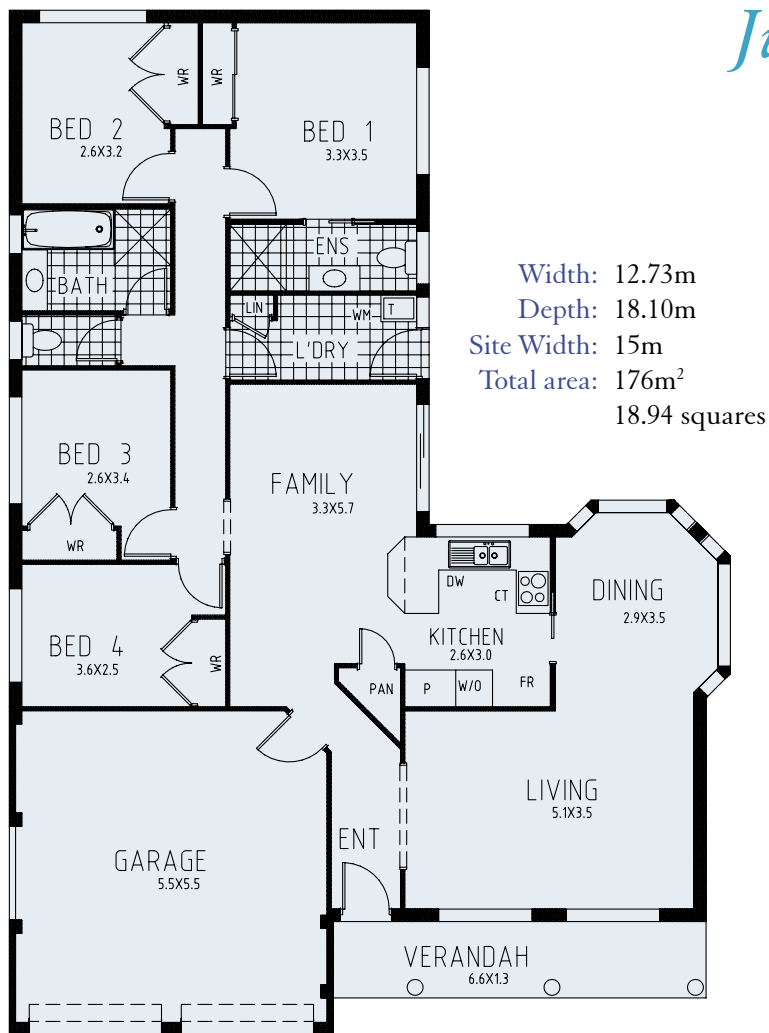


Master built family homes since 1965

Elizabeth

from
Westminster Homes

Just try to find a better value 4 bedroom home!



If you're looking for value, you'll find it in the Elizabeth. With its attractive front porch, this 19 square home is good looking and good to live in too. There's a stylish lounge/dining room plus a combined kitchen family area. All four bedrooms have built-in wardrobes and the main has its own ensuite bathroom.

The Elizabeth's L-shape to the rear design creates an ideal courtyard area for outdoor living. Internal access to the double garage is another example of Westminster Home's thoughtful planning for your family. If you don't need 4 bedrooms, Westminster have a 3 bedroom Elizabeth that's even more affordable!

Westminster Homes is a family owned building company that's been building family homes since 1965. We pride ourselves on building quality, well-designed homes at an affordable price, and delivering outstanding service every step of the way.



Master built family homes since 1965