



Cremorne

from
Westminster Homes



Master built family homes since 1965

Cremorne

from
Westminster Homes

A versatile home for all the family

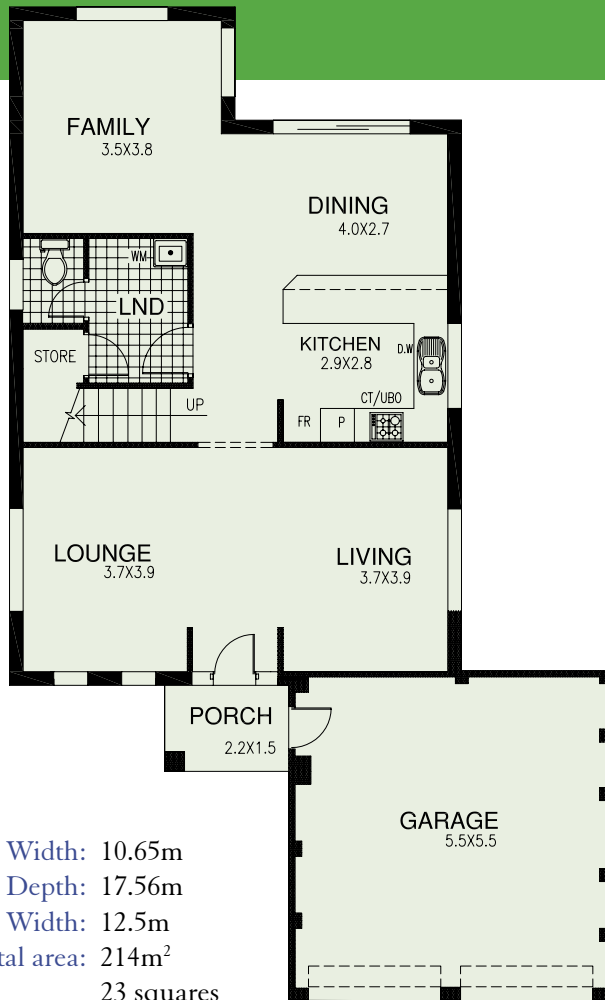
Classic design has created a contemporary two-storey for narrow blocks as little as 12.5 metres wide. Yet there's still plenty of room for all the family, thanks to open planning and generous room sizes throughout the home. The practical kitchen with its long breakfast bar is a focal point for everyday living and overlooks the rear family/dining area. At the front of the home a versatile lounge and living area add more versatility to the Cremorne's living areas.

Upstairs are 4 large bedrooms including a master bedroom with its own balcony and ensuite. There's also a double garage accessed via the covered front porch.

Westminster Homes is a family owned building company that's been building family homes since 1965. We pride ourselves on building quality, well-designed homes at an affordable price, and delivering outstanding service every step of the way.



Master built family homes since 1965



Width: 10.65m
Depth: 17.56m
Site Width: 12.5m
Total area: 214m²
23 squares

