



# Bligh

*from*  
Westminster Homes

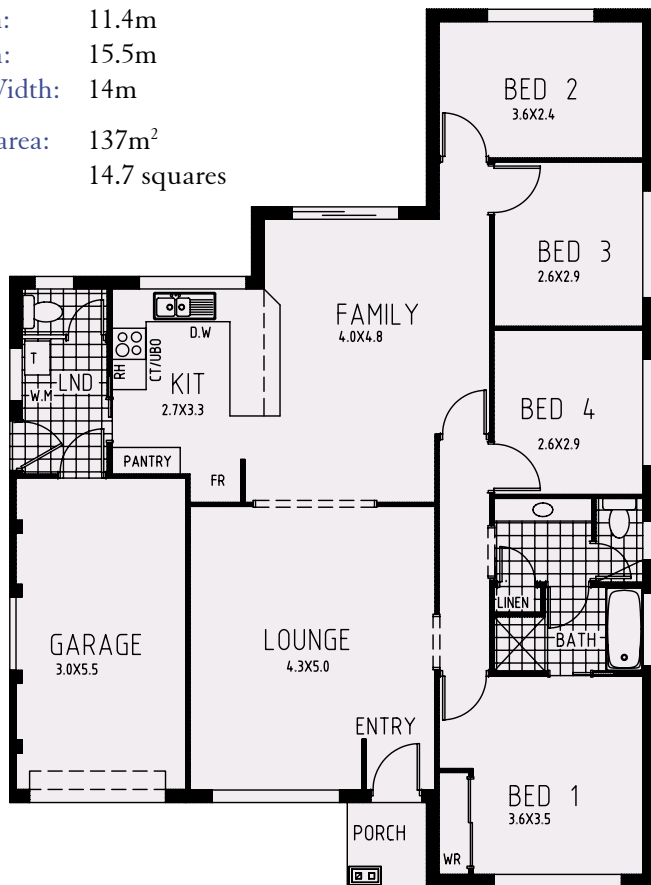


*Master built family homes since 1965*

# Bligh from Westminster Homes

## *A versatile approach to family values!*

Width: 11.4m  
Depth: 15.5m  
Site Width: 14m  
Total area: 137m<sup>2</sup>  
14.7 squares



Just because you're on a budget doesn't mean you have to do without the good things in life! The Bligh is an easy-to-live-in family home with 4 bedrooms including a master bedroom with direct access to the cleverly designed 3-way bathroom.

The Bligh's spacious living room opens to an open plan family room and kitchen. The combined space is almost 10 metres long, there's a long breakfast bar overlooking the generous kitchen - that's real room to move. The adjacent laundry provides direct access to the garage so there are only a few steps from your car to your kitchen. There's also a second separate toilet, conveniently located to the family entertainment area.

Westminster Homes is a family owned building company that's been building family homes since 1965. We pride ourselves on building quality, well-designed homes at an affordable price, and delivering outstanding service every step of the way.



*Master built family homes since 1965*